



VESTIL MANUFACTURING CORP.

2999 North Wayne Street, P.O. Box 507, Angola, IN 46703

Telephone: (260) 665-7586 -or- Toll Free (800) 348-0868

Fax: (260) 665-1339

www.vestilmfg.com e-mail: sales@vestil.com

H-TRAIL TOWABLE SHOP CRANE



Receiving Instructions

After delivery, remove the packaging from the product. Inspect the product closely to determine whether it sustained damage during transport. If damage is discovered, record a complete description of it on the bill of lading. If the product is undamaged, discard the packaging.

NOTE: The end-user is solely responsible for confirming that product design, use, and maintenance comply with laws, regulations, codes, and mandatory standards applied where the product is used.

Technical Service & Replacement Parts

For answers to questions not addressed in these instructions and to order replacement parts, labels, and accessories, call our Technical Service and Parts Department at (260) 665-7586. The Department can also be contacted online at <https://www.vestil.com/page-parts-request.php>.

Electronic Copies of Instruction Manuals

Additional copies of this instruction manual may be downloaded from <https://www.vestil.com/page-manuals.php>.

Table of Contents

	Page
Signal Words.....	2
Safety Instructions.....	2
Exploded View & Bill of Materials.....	3
Rated Loads for Specified Boom Lengths.....	4
Specifications.....	4
Loading the Crane.....	5
Operating the Manual Hydraulic Pump.....	5
Boom Length Adjustment.....	6
Towing the Crane.....	6
Record of Satisfactory Condition.....	6
Inspections.....	7
Maintenance.....	8
Labeling Diagram.....	8
Limited Warranty.....	9

SIGNAL WORDS

SIGNAL WORDS appear in this manual to draw the reader's attention to important safety-related messages. The following are signal words used in this manual and their definitions.

⚠ DANGER

Identifies a hazardous situation which, if not avoided, **WILL** result in **DEATH** or **SERIOUS INJURY**. Use of this signal word is limited to the most extreme situations.

⚠ WARNING

Identifies a hazardous situation which, if not avoided, **COULD** result in **DEATH** or **SERIOUS INJURY**.

⚠ CAUTION

Indicates a hazardous situation which, if not avoided, **COULD** result in **MINOR** or **MODERATE** injury.

NOTICE

Identifies practices likely to result in product/property damage, such as operation that might damage the product.

SAFETY INSTRUCTIONS

We strive to identify hazards associated with the use of our products. However, no manual can address every risk. The end-user must apply sound judgment whenever assembling, using, inspecting, or maintaining this product.

⚠ WARNING

Material handling is dangerous. Improper or careless operation might result in serious personal injuries.

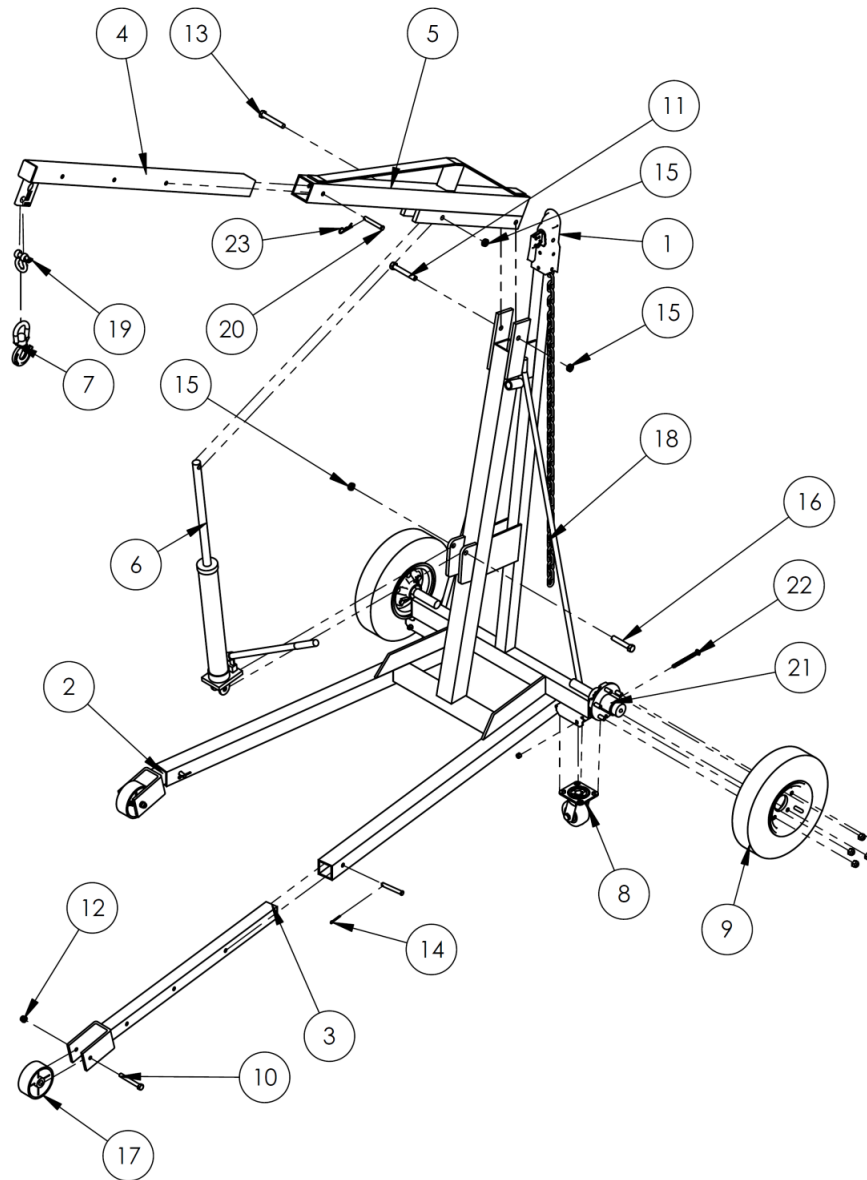
- **Failure to read and understand the entire manual before assembling, using or servicing the product constitutes misuse.** Read the manual to refresh your understanding of proper use and maintenance procedures as necessary.
- Always apply proper crane, hoist procedures, and load rigging methods learned during training.
- DO NOT attempt to lift items that weigh more than the maximum rated load of this crane. The capacity of the crane decreases as boom length increases. Capacities for all 3 boom lengths appear in the [RATED LOADS](#) and [SPECIFICATIONS](#) sections on p. 4.
- DO NOT stand or sit on the crane or the load.
- DO NOT contact a suspended load. Stand clear of the load while raising and lowering it!
- ONLY use the crane on even, level, compacted surfaces capable of supporting the combined weight of the crane and a full capacity load. DO NOT attempt to move the crane up or down sloped surfaces.
- DO NOT perform maintenance on this crane UNLESS it is unloaded and all wheels and casters are chocked to prevent movement. ONLY install manufacturer-approved replacement parts.
- DO NOT attempt to raise a load unless the load hook is centered above it.
- Observe the boom while raising and lowering a load. It should rise smoothly. Watch for binding or jerky movement and listen for unusual noises. Tag the unit "Out of order" and DO NOT use it if you observe anything abnormal.
- DO NOT use the crane unless it is in satisfactory condition. Inspect the unit before each use following the [INSPECTION](#) instructions on p. 7 to determine whether it is in satisfactory condition.
- Always watch the load carefully while raising and lowering the boom.
- Before leaving the crane unattended, unload it and relieve hydraulic pressure by turning the lowering plunger counterclockwise until the boom begins to descend. Lower the boom completely; then close the release valve. See [OPERATING THE MANUAL HYDRAULIC PUMP](#) on p. 5.
- DO NOT alter the pressure relief valve setting!
- DO NOT use the crane UNLESS it is labeled as shown in the [LABELING DIAGRAM](#) on p. 8. Each label must be easily readable and undamaged.
- DO NOT modify this crane in any way. Modifications automatically void the [LIMITED WARRANTY](#) and might make it unsafe to use.

NOTICE

Proper use and maintenance are essential for this product to function properly.

- Always use this product in accordance with the instructions in this manual and consistent with any training relevant to all other devices used with this product (e.g. rigging).
- Periodically lubricate pivot points.
- DO NOT continue to move the pump handle back-and-forth if the boom is fully elevated.
- Only use approved replacement parts. To order replacement or spare parts for this equipment, contact the factory.

EXPLODED VIEW & BILL OF MATERIALS



Item	Part no.	Description	Qty.	Item	Part no.	Description	Qty.
1	28-514-081	WELDMENT, FRAME	1	13	11319	BOLT, Ø5/8-11 UNC x 4" LG	1
2	28-516-040	WELDMENT, BRACKET, WHEEL, LEFT	1	14	65105	COTTER PIN, LOW CARBON STEEL, ZINC PLATED, Ø 5/32 x 1 1/2 LG	2
3	28-516-041	WELDMENT, LEG, TELESCOPING, RIGHT	1	15	37036	NYLOCK NUT Z PLATED, 5/8 - 11	3
4	28-514-080	FRAME, WELDMENT, BOOM	1	16	13317	HHCS, GRADE 5, Z PLATED, 5/8"-11 x 3 1/2"	1
5	28-514-079	WELDMENT, FAME, BEAM	1	17	16-132-214	5" X 2" STEEL WHEEL	2
6	01-140-022	ASSEMBLY, CYLINDER/PUMP	1	18	09-145-018	CHAIN, 5/16" x 56" LG	1
7	08-145-001	SPEC HDW, SWIVEL HOOK 2-TON	1	19	08-145-010	SPECIALTY HARDWARE, Ø1/2"-2 TON SHACKLE	1
8	16-132-011	4 x 2 MOLD ON RUBBER SWIVEL	2	20	28-112-030	Ø1/2 X 3 1/2 RETAINING CLEVIS PIN, ZINC PLATED	3
9	16-132-279	PNUMATIC TIRE 4.80" x 8"	2	21	16-132-280	WHEEL/CASTER, RIM FOR PNEUMATIC TIRE	2
10	11219	BOLT, HEX HEAD, Ø 1/2 - 13 UNC X 4 LG	2	22	99-612-001	PIN, BULLDOG BOLT AND NUT ASSEMBLY	2
11	11324	HEX BOLT DIA 5/8" - 11 x 5 1/2" LG	1	23	45286	#11 HITCH PIN CLIP, Ø1/8" X 2 5/8 LG	1
12	37030	1/2"-13 NYLON INSERT LOCK NUT	2	24	33090	WASHER, FLAT, SAE, 5/8	2
				25	08-145-041	SPECIALTY HARDWARE, SNAP HOOK, Ø5/16	2

RATED LOADS FOR SPECIFIED BOOM LENGTHS

The boom has 3 length settings: 53³/₄ inches; 65³/₄ inches; 77³/₄ inches. Boom length increases in 12 inch increments. Boom length determines the capacity of the crane as shown in the table below, i.e. capacity decreases as boom length increases. The legs are also adjustable to 3 set points in approximately 12 inch increments as well. **Both legs must be adjusted to match the boom configuration.** When the boom is fully extended, both legs must be fully extended. When the boom is extended to its intermediate length, the legs should also be pinned at their intermediate lengths.

Boom & Leg configuration	Boom/Arm length	Leg Length	Capacity
Retracted	53 ³ / ₄ " 137cm	71" 180cm	2,000 lb. (909kg)
Intermediate extension	65 ³ / ₄ " 167cm	81 ⁷ / ₈ " 208cm	1,500 lb. (681kg)
Fully extended	77 ³ / ₄ " 197cm	93 ³ / ₄ " 238cm	650 lb. (295kg)

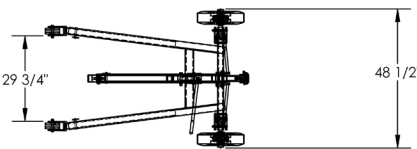
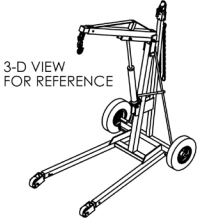
SPECIFICATIONS

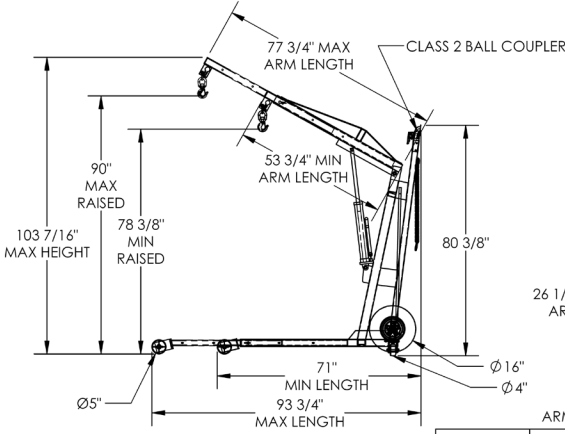
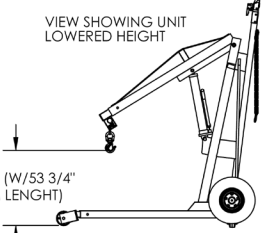
Documents that provide specifications for H-TRAIL series cranes are downloadable from Vestil's website. Specifications include dimensions, net weight, and capacity information. To access the most recent specifications document for your product, navigate to this webpage: <https://www.vestil.com/product.php?FID=589>. Click the *Product Specifications Table* tab. Scroll the page to the entry for the model you purchased, and click the button in the *PDF* column that looks like a pencil inside a box. A PDF file will open. This file is the specifications document for your crane. Print a copy of the document and keep it with your copy of this manual. The following is an exemplar specifications document for model H-TRAIL.

HOIST TRAILER - H-TRAIL

APPROX WEIGHT: 529 lbs.
DOES NOT INCLUDE WEIGHT OF POWER OR PACKAGING!!!

ANY ADDITIONS, DELETIONS, OR OMISSIONS MUST BE CORRECTED ON THIS DRAWING AS THIS DRAWING WILL BE CONSIDERED ALL INCLUSIVE

ARM LENGTH ADJUSTMENT CHART

ARM LENGTH	UNIT LENGTH	RAISED HEIGHT	LOWERED HEIGHT	CAPACITY
53 3/4"	71"	78 3/8"	26 1/4"	2000 LBS
65 3/4"	81 7/8"	84 5/16"	20"	1150 LBS
77 3/4"	93 3/4"	90"	13 3/4"	650 LBS

ALL GRAPHICS PROVIDED ARE FOR REFERENCE ONLY. IF CERTAIN DIMENSIONS ARE CRITICAL PLEASE VERIFY THOSE DIMENSIONS WITH YOUR SALESPERSON

DIMENSION TOLERANCE ± 1/4"

STANDARD FEATURES

MODEL IS: H-TRAIL
 MAXIMUM WIDTH: 48 1/2"
 MAXIMUM HEIGHT: 103 7/16"
 MAXIMUM LENGTH: 93 3/4"
 (3) ADJUSTABLE ARM LENGTHS
 ARM LENGTH DETERMINES HEIGHTS AND CAPACITY - SEE CHART
 CASTERS: 2- PNEUMATIC TIRE, Ø16"
 2- HARD RUBBER, SWIVEL, Ø4" x 2"
 2- SEMI STEEL, RIGID, Ø5" x 2"
 DURABLE LIQUID PAINT BLUE FINISH

SPECIAL FEATURES

NONE

I, THE UNDERSIGNED, AGREE THAT THE PRODUCT AS REPRESENTED SATISFIES DESIGN AND DIMENSION REQUIREMENTS. I ALSO ACKNOWLEDGE MY DUTY TO CONFIRM PRODUCT AND INSTALLATION COMPLIANCE WITH ALL APPLICABLE FEDERAL, STATE AND LOCAL REGULATIONS AND STANDARDS.

UNITS REQUIRING APPROVAL DRAWINGS OR MODIFIED ARE NON-RETURNABLE

[] As drawn [] As marked

Signed: _____ Date: _____

Printed Name: _____

LEAD TIME WILL START UPON RECEIPT OF SIGNED APPROVAL DRAWING

DISTRIBUTOR'S NAME: VESTIL MANUFACTURING		P.O.# <input checked="" type="checkbox"/>	
DRAWN BY: WHR	DATE: 9/27/12	W.O.# <input checked="" type="checkbox"/>	
REFERENCE: X	SCALE: 1:36	SALES: X	
QUOTED LEAD TIME: X	QUOTE # X	FILE NAME: 28-007-050	

LOADING THE CRANE

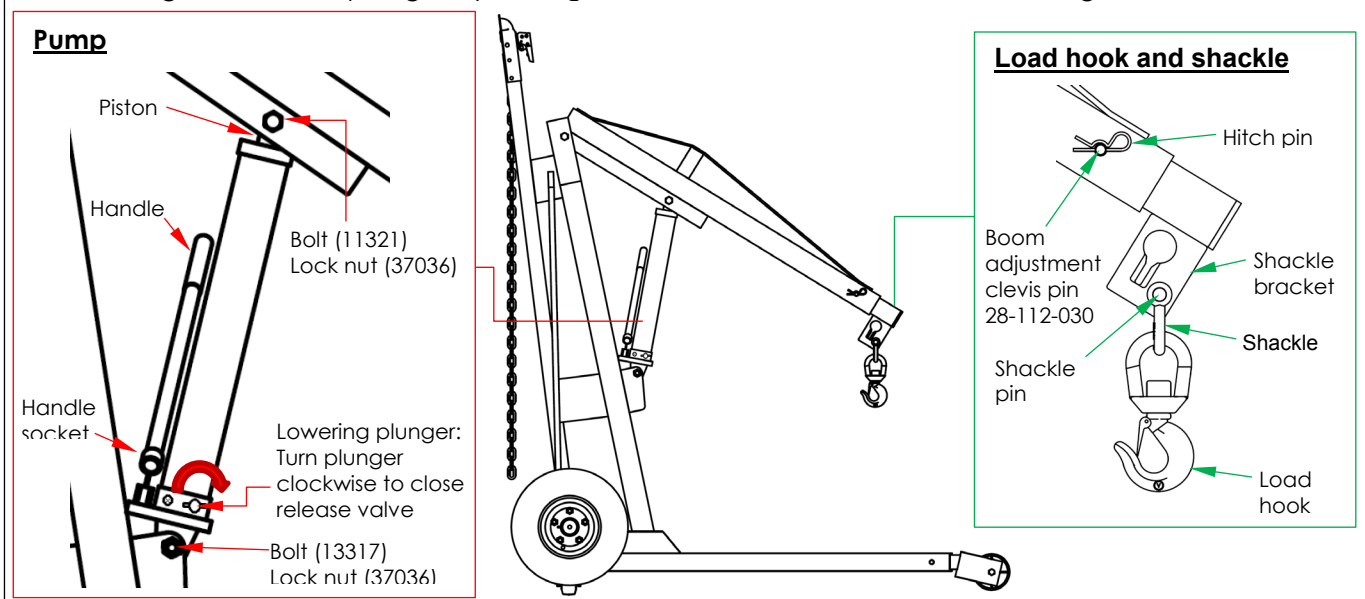
- 1) Disconnect the crane from the trailer hitch.
- 2) Lift the tongue to put all four casters into contact with the ground. NOTE: The pneumatic wheels should no longer contact the ground.
- 3) Prepare the load with appropriate rigging and attach rigging to the hook at the end of the boom.
- 4) If necessary, adjust the position of the boom.
 - a. To raise the boom, move the pump handle back-and-forth.
 - b. To lower the boom, slowly turn the release handle counterclockwise until the boom begins to lower. To increase the lowering rate, turn the release handle further counterclockwise. Close the release valve when the boom position is satisfactory. Close the valve by turning the release handle clockwise until the connection is tight.
- 5) Attach the rigging to the load hook. The floor crane must be on a sound, level and dry surface. Before raising the boom, be sure that the load hook is centered above the load. If the hook is not centered above the load, the load might swing when the boom lifts it off of the ground.

NOTE: Rigging and all other load-engaging equipment must be added to the weight of the load to determine the net weight applied to the crane. The net weight must be less than or equal to the capacity of the crane. As the table in [RATED LOADS FOR SPECIFIED BOOM LENGTHS](#) on p. 4 indicates, capacity decreases as boom length increases.
- 6) Slowly raise the load until it is suspended. Only raise the load a few inches above the ground.
 - a. The load should not swing as it rises.
 - b. The crane should not tip or rock while suspended.
 - c. If the crane is unstable when the load is suspended, do not use the crane to transport the load. Return it to the ground and use another means to move it.
- 7) Carefully push the crane to transport the load. Do not leave the crane with a suspended load. Always lower the boom until the load is entirely supported by the ground or other surface before leaving the crane.

OPERATING THE MANUAL HYDRAULIC PUMP

This crane is equipped with a hand-operated hydraulic pump that controls the up and down movement of the boom. To raise the boom, move the handle back-and-forth until the desired height is achieved. Lowering is controlled by a lowering plunger. With the lowering plunger in the closed position (rotated clockwise until the connection is snug), moving the pump handle back-and-forth causes a piston to extend. The piston presses against the bottom of the boom. As the piston extends, the boom pivots upwardly which raises the load hook.

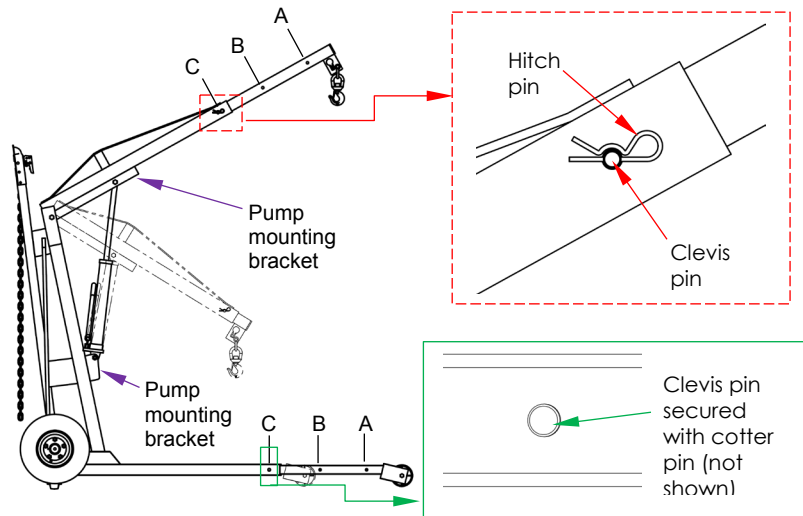
To lower the boom, pull the pump handle out of the handle socket. See "Pump" diagram below. There are slots in the end of the handle that fit onto the lowering plunger. Engage the plunger in the handle slots and slowly rotate the plunger counterclockwise until the boom begins to descend. The farther the plunger is turned counterclockwise, the faster the boom lowers. If you wish to decrease load elevation but not lower the load completely, simply close the plunger when the load achieves the desired height. Close the plunger by turning it clockwise until the connection is snug.



BOOM LENGTH ADJUSTMENT

To adjust the length of the boom, first use the hand pump to raise the end of the boom until the boom is level. Remove the hitch pin; then pull out the clevis pin. The inner boom is now unfastened from the outer boom. Pull the inner boom and align the appropriate holes in the inner and outer booms to achieve the necessary boom length. Reinstall the clevis pin and secure it with the hitch pin.

Next, adjust both legs to match the boom length. For example, when the boom is pinned in position, the legs should also be pinned in position C.



TOWING THE CRANE

This product is designed to be towed behind a vehicle having a class 2 ball hitch. To put the crane into towing configuration, grasp the tongue of the trailer and slowly pull it downwards. The crane will pivot onto the pneumatic tires as the tongue is lowered.

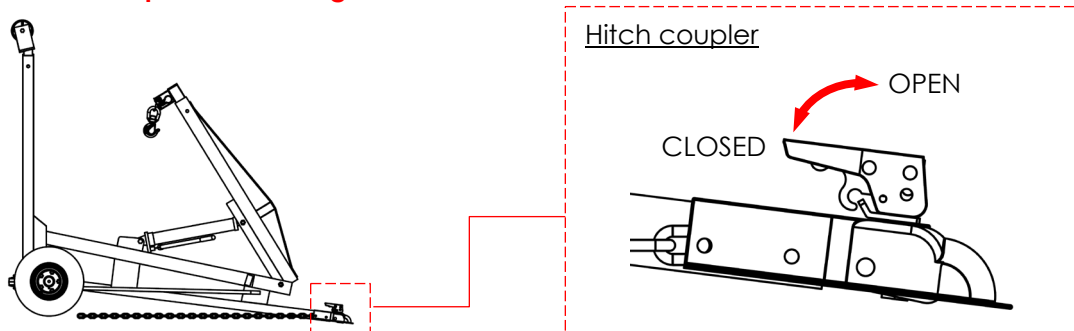
NOTE: The crane weighs 530 lb. If necessary, two or more people should work together to put the crane into towing configuration.

Remove the pump handle from the socket and put it in the cab of the towing vehicle.

Attach the coupler to the ball hitch. The ball clamp must be open in order for the ball hitch to seat properly inside the coupler. Once the ball is seated in the coupler, close the clamp. (See diagram below).

Check the crane to make sure that the boom and legs are secure. Check all fasteners (pins, bolts, and nuts) for secure connections.

DO NOT exceed 45mph while towing the crane.



RECORD OF SATISFACTORY CONDITION

Before putting the unit into service, make a record its condition and operation. Photograph the unit from multiple angles. Take close range photographs of the hitch coupler, all welds, the boom and boom pivot points, the shackle and load hook, the pump and pump pivot points, wheels and casters, the chain, and all fasteners. Cycle the pump: maximally extend the piston and then open the release valve to completely retract the piston. Describe the effort necessary to move the pump handle back-and-forth. Adjust the boom. Attach the hitch coupler to a ball hitch. Describe the effort necessary to open and close the hitch coupler. Collect all writings, videos, and photographs in a file. This file is a record of the unit in *SATISFACTORY CONDITION*. **Compare all inspection results to this RECORD to determine if the unit is in satisfactory condition.** Restore the crane to satisfactory condition BEFORE using it again. Purely cosmetic changes, like damaged surface coating (paint or powdercoat) are not changes from satisfactory condition. However, touchup paint should be applied as soon as damage occurs to prevent rust development.

INSPECTIONS

⚠ WARNING

If a problem is discovered during an inspection, restore the crane to normal operating condition BEFORE using it again.

- DO NOT use a crane that is structurally damaged in any way. Structural damage includes, but is not limited to, cracked welds, warping or deformation of the frame, the upright girder, or the inner or outer boom.
- Improper maintenance or repair may make the crane unsafe to use, which could result in serious personal injuries or death. DO NOT attempt to repair or maintain the crane UNLESS you are qualified and authorized to do so.
- Lower the boom and unload the crane BEFORE beginning maintenance/repairs.
- Only qualified, authorized personnel trained to maintain hydraulic components should attempt troubleshooting and repair of this equipment.

Inspections and repairs should only be performed by qualified persons. Compare the results of each inspection to the [RECORD OF SATISFACTORY CONDITION](#) (the "RECORD"). Do not use the crane unless all parts are in satisfactory condition. Replace parts that are not in satisfactory condition before returning the unit to service. **DON'T GUESS! If you have any questions about the condition of your crane, speak with TECHNICAL SERVICE personnel.** The phone number is provided on the cover page of this manual. **Never make temporary repairs of damaged or missing parts.** Only use manufacturer-approved replacement parts.

(A) Before each use, inspect the following items:

- 1.) Structural members, pump mounting brackets, & booms (inner and outer) – Examine each item for damage, deformation, and corrosion.
- 2.) Pump – Raise and lower the boom. Listen for unusual noise; watch the piston to confirm that it extends and retracts smoothly and does not bind or lurch. Check the pump for oil leaks
- 3.) Load hook and shackle – Closely examine the load hook and shackle. Make sure that neither is severely worn, warped, bending or cracking. Confirm that the safety latch (of the hook) operates correctly. Also inspect the shackle bracket. See [Load hook & shackle](#) diagram on p. 5. The bracket should be square and rigid and lack cracks and significant bends. The pin hole (for the shackle pin) should not be elongated.

(B) Inspect the following at least once per month:

- 1.) Hardware – Check the integrity of all nuts, bolts, and pins. Replace any item that is damaged.
- 2.) Casters – Move the crane and determine whether any caster is loose, significantly worn, or damaged. Remove any material stuck to the surface of the casters.
- 3.) Wheels – Put the crane into towing configuration and connect it to a class 2 ball coupler. Tow the crane a short distance. Listen for unusual sounds as the wheels turn. Watch the crane as it moves. It should roll smoothly, i.e. not wobble from side-to-side. Check tire inflation and add/remove air as necessary. Tire inflation specifications are molded onto the side of the tires.
- 4.) Hitch coupler – Examine the hitch coupler. Make sure that the clamp mechanism functions properly by attaching the coupler to a class 2 ball hitch. Lock the ball clamp. Lift the tongue to confirm that the coupler is securely hitched to the ball.
- 5.) Complete crane assembly – Listen for unusual noises and watch for abnormal movement while elevating and lowering the boom.
- 6.) Labels – Check all information/safety labels. The crane should be labeled at all times as shown in the [LABELING DIAGRAM](#) on p. 8.

(C) Yearly inspection:

In addition to the inspections described above in parts A and B, check the hydraulic fluid at least once per year. Change the oil if it darkens, becomes gritty, or turns a milky color (indicating the presence of water). Replace the hydraulic fluid with anti-wear hydraulic oil of viscosity grade 150 SUS at 100°F, (ISO 32 at 40°C), for example, AW 32 or HO 150 hydraulic oil, or a non-synthetic transmission fluid. You may use a synthetic transmission fluid if you flush the system with the synthetic fluid before filling the reservoir.

MAINTENANCE

Implement a maintenance program to ensure that the product functions properly. The following steps should be utilized in conjunction with inspections.

⚠️WARNING DO NOT use the product if adjustments and repairs are incomplete! Return it to service ONLY after finishing all necessary repairs and adjustments but do not modify the crane.

“Adjustments” are simple corrections that restore the crane to normal operating condition, such as tightening loose fasteners or removing dirt or other debris from the surface. “Repairs” involve removing worn parts and installing replacement parts.

“Modifications” on the other hand, are actions that alter the crane from its original condition. Such actions include bending the frame or removing parts. **NEVER** modify this product. Modifications automatically void the limited warranty and might make the crane unsafe to use.

Step 1: Tag the boom, “Out of Service.”

Step 2: Remove any dirt or other matter from all surfaces.

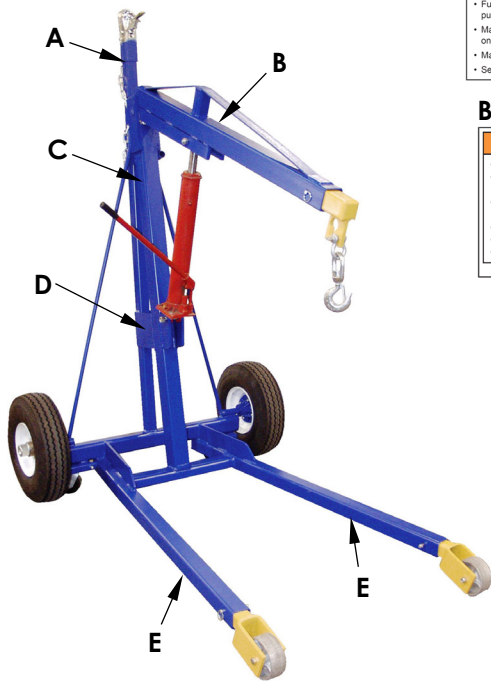
Step 3: Conduct the scheduled INSPECTION on p. 6. If deformity, corrosion, rusting, or excessive wear of structural members is found, permanently remove the unit from service.

Step 4: Perform all necessary adjustments, replacements and/or repairs as indicated during the inspection. DO NOT modify the crane in any way without the express, written approval of Vestil.

Step 5: Make a dated record of all repairs, adjustments and/or replacements made to the crane.

LABELING DIAGRAM

Label content and locations are subject to change so your product might not be labeled exactly as shown. Compare the diagram below to your RECORD OF SATISFACTORY CONDITION. If there are any differences between actual labeling and this diagram, contact TECHNICAL SERVICE. Replace all labels that are damaged, missing, or not easily readable (e.g. faded). To order replacement labels or to inquire whether your unit is properly labeled, contact the TECHNICAL SERVICE and parts department online at <https://www.vestil.com/page-parts-request.php> or by calling (260) 665-7586 and asking for the Parts Department.



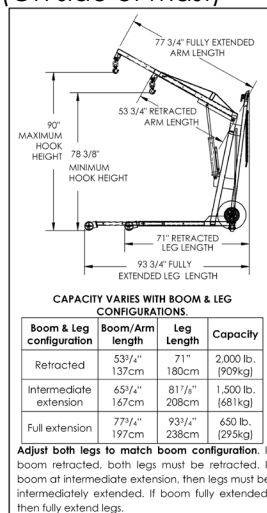
A: Label 1170 (Towing instructions)

TOWING INSTRUCTIONS	INSTRUCCIONES DE REMOLQUE
<ul style="list-style-type: none"> Fully retract telescoping sections Fully lower boom & secure by placing pump handle in storage position Maintain tire pressure as specified on tires Maximum towing speed 45 MPH Secure safety chains to tow vehicle 	<ul style="list-style-type: none"> Retraiga completamente las secciones telescópicas Baje completamente el brazo y asegúrelo colocando el mango de la bomba en la posición de almacenamiento Mantenga la presión de los neumáticos como se especifica en los neumáticos Velocidad máxima de remolque 45 MPH Asegure las cadenas de seguridad al vehículo remolcador

B: Label 586 (On side of boom)

⚠️ WARNING	⚠️ ADVERTENCIA	⚠️ AVERTISSEMENT
<ul style="list-style-type: none"> DO NOT exceed rated capacity LOWER LOAD before moving to avoid load swing NEVER STAND under, beside or in front of load USE on hard level surface INSPECT connections before using READ manual before use 	<ul style="list-style-type: none"> No exceda la capacidad tasada Descienda la carga antes de mover para evitar que la carga se balancee Nunca se situe debajo, al lado o delante de la carga Use en una superficie a nivel dura Inspeccione las conexiones antes del uso Lea el manual antes del uso 	<ul style="list-style-type: none"> NE PAS DÉPASSER la capacité nominale DESCENDRE la charge avant de la transporter pour éviter la giration JAMAIS vous mettre sous, à côté de ou devant une charge UTILISER sur un sol plat et dur INSPECTER les connexions avant utilisation LIRE le guide avant utilisation

C: Label 1171 (On side of mast)



CAPACITY VARIES WITH BOOM & LEG CONFIGURATIONS.

Boom & Leg configuration	Boom/Arm length	Leg Length	Capacity
Retracted	53 3/4" 137cm	71" 180cm	2,000 lb. (909kg)
Intermediate extension	65 1/4" 167cm	81 1/4" 208cm	1,500 lb. (681kg)
Full extension	77 1/4" 197cm	93 1/4" 238cm	450 lb. (205kg)

Adjust both legs to match boom configuration. If boom retracted, both legs must be retracted. If boom at intermediate extension, then legs must be intermediately extended. If boom fully extended, then fully extend legs.

D: Label 1153

MODEL / MODÉLO / MODÈLE	_____
WEIGHT / PESO / MASS	_____
CAPACITY / CAPACIDAD / CAPACITÉ	_____
SERIAL / SERIE / SÉRIE	_____
UNITS: 2.2 lb. = 1kg 1" (or 1in.) = 2.54cm	
1153	

E: Label 252 (underside of both legs; visible when in towing configuration)



LIMITED WARRANTY

Vestil Manufacturing Corporation ("Vestil") warrants this product to be free of defects in material and workmanship during the warranty period. *Our warranty obligation is to provide a replacement for a defective original part if the part is covered by the warranty, after we receive a proper request from the warrantee (you) for warranty service.*

Who may request service?

Only a warrantee may request service. You are a warrantee **if** you purchased the product from Vestil or from an authorized distributor AND Vestil has been fully paid.

What is an "original part"?

An original part is a part used to make the product as shipped to the warrantee.

What is a "proper request"?

A request for warranty service is proper if Vestil receives: 1) a photocopy of the Customer Invoice that displays the shipping date; AND 2) a written request for warranty service including your name and phone number. Send requests by any of the following methods:

<u>Mail</u>	<u>Fax</u>	<u>Email</u>
Vestil Manufacturing Corporation 2999 North Wayne Street, PO Box 507 Angola, IN 46703	(260) 665-1339 <u>Phone</u> (260) 665-7586	sales@vestil.com

In the written request, list the parts believed to be defective and include the address where replacements should be delivered.

What is covered under the warranty?

After Vestil receives your request for warranty service, an authorized representative will contact you to determine whether your claim is covered by the warranty. Before providing warranty service, Vestil may require you to send the entire product, or just the defective part or parts, to its facility in Angola, IN. The warranty covers defects in the following *original* dynamic components: motors, hydraulic pumps, electronic controllers, switches and cylinders. It also covers defects in *original* parts that wear under normal usage conditions ("wearing parts"), such as bearings, hoses, wheels, seals, brushes, and batteries.

How long is the warranty period?

The warranty period for original dynamic components is 1 year. For wearing parts, the warranty period is 90 days. The warranty periods begin on the date when Vestil ships the product to the warrantee. If the product was purchased from an authorized distributor, the periods begin when the distributor ships the product. Vestil may, at its sole discretion, extend the warranty periods for products shipped from authorized distributors by up to 30 days to account for shipping time.

If a defective part is covered by the warranty, what will Vestil do to correct the problem?

Vestil will provide an appropriate replacement for any covered part. An authorized representative of Vestil will contact you to discuss your claim.

What is not covered by the warranty?

1. Labor;
2. Freight;
3. Occurrence of any of the following, which automatically voids the warranty:
 - Product misuse;
 - Negligent operation or repair;
 - Corrosion or use in corrosive environments;
 - Inadequate or improper maintenance;
 - Damage sustained during shipping;
 - Collisions or other incidental contacts causing damage to the product;
 - Unauthorized modifications: DO NOT modify the product IN ANY WAY without first receiving written authorization from Vestil. Modification(s) might make the product unsafe to use or might cause excessive and/or abnormal wear.

Do any other warranties apply to the product?

Vestil Manufacturing Corp. makes no other express warranties. All implied warranties are disclaimed to the extent allowed by law. Any implied warranty not disclaimed is limited in scope to the terms of this Limited Warranty.

